



## Guidelines for the Use of Brand Logo & Icons



## PRIMARY LOGO

The primary logo is the preferred logo. It should be used in most applications.

The black or white logo variations must be used when placed on a darker or image background.



## SECONDARY LOGO

The secondary logo should be used for all group applications where the generic Phase3 brand is used. It should be used when dealing with a space issue, where the main logo becomes too small or doesn't fit into its allocated space.

e.g. the header on the website.

**Phase3**  
t e l e c o m

**Phase3**  
t e l e c o m

**Phase3**  
t e l e c o m

## LOGO - APPLICATION - MINIMUM SIZE

To ensure maximum reproduction quality of the Phase3 identity, the primary logo may not be reduced smaller than 20mm.

The secondary logo may not be reduced smaller than 10mm.

20mm



10mm



## LOGO - INCORRECT IDENTITY CONFIGURATION & COLOUR USAGE

The correct colour application of the Phase3 primary, secondary and tertiary logo should only ever be used as they are shown in previous pages of this document. No other colour application of the identity may be used and colour may not be mixed.

These logos may not be stretched in any way. The icon must always appear to the left of the brand name. These rules apply to all logo variants.



## FONTS

The font used throughout any and all design and communication is Century Gothic.

As the font family is extensive, no secondary font is to be used.

***BOLD ITALIC***

**BOLD**

*ITALIC*

REGULAR

## COLOUR PALETTE PRIMARY & SECONDARY

The Phase3 primary colour palette may be used in Pantone, CMYK and RGB colours to allow for use across all platforms of print and electronic media. Any deviation in colour, spot, process or RGB contrary to these colours is not acceptable and is not permitted under any circumstances.



### PRIMARY



Primary Red

Hex Value: ed3439  
Pantone Red 1797 U

### PRIMARY



Primary Grey

Hex Value: aaa7ad  
Pantone Grey 402 U

### PRIMARY



Primary Black

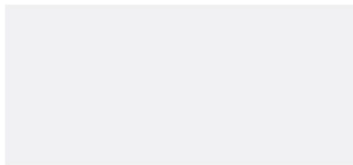
Hex Value: 2b2a29  
Pantone Black 19-0923 U

## COLOUR PALETTE SECONDARY

The Phase3 tertiary colour palette must be used only as an accent to the primary and secondary colour palette (e.g: background colours, iconography, etc). It may be used in CMYK and RGB colours to allow for use across all platforms of print and electronic media. Any deviation in colour, spot, process or RGB contrary to these colours is not acceptable and is not permitted under any circumstances.



### SECONDARY



Hex Value: f1f1f2

### SECONDARY



Hex Value: bbbdbf

### SECONDARY



Hex Value: 808184

### SECONDARY



Hex Value: 404041



## ICONOGRAPHY

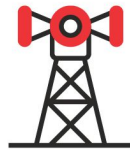
Each of the icons below may only ever be used to depict its prescribed title, or something of a directly similar nature (e.g: the Business Apps icon may be used to show Data and Analytics, but may not be used to depict Stocks).



Screen



Modem



Antennae



Satellite



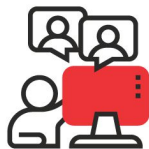
Satellite  
Dish



Internet



Social  
Networking



Video  
Chat



Business  
Apps



Online  
Learning



Online  
Banking



Email &  
Internet



Online  
Entertainment

# ICONOGRAPHY

The Phase3 iconography must always and only be used in one of the six colour ways shown.

